

Historic Takoma Walking Tour

Walking the Dinky Line

Walk the path of a 1900s trolley to the site of the
Glen Sligo Hotel and Wildwood Amusement Park

BEAUTIFUL WILDWOOD. – Beginning next Monday, May 28, a new resort will be formally opened to the Washington public, under the name of Beautiful Wildwood. Situated about a mile from Takoma and about thirty minutes' ride by trolley from the city, there has been erected in the heart of the pines a large hotel with broad porches on all sides, surrounded by acres of grounds. Beautiful in nature, with the Glen Sligo creek coursing through its center, Wildwood offers an ideal spot for the seekers of country air and an evening's entertainment. The management have arranged to present polite vaudeville, and the stage been so constructed that the patrons sitting in their chairs on the porches of the hotel can witness the performance. Special inducements are offered to picnic parties and family gatherings, a dairy lunch room being equipped in the log cabin building at the entrance to the grounds overlooking the lake, and a special matinee at 4 o'clock will be given for the ladies and children

26, 1900-24 PAGES

AMUSEMENTS AMUSEMENTS

Bring the Family
and
COME EARLY.
All Lines Connect With
BRIGHTWOOD CARS
to the Opening of
Beautiful
WILDWOOD
MONDAY, MAY 28.
EXCELLENT CUISINE.
A la Carte and Table D'hote.

POLITE VAUDEVILLE

DANCING

ACADEMY OF MUSIC.

From the *Evening Star*, Saturday, May 26, 1900

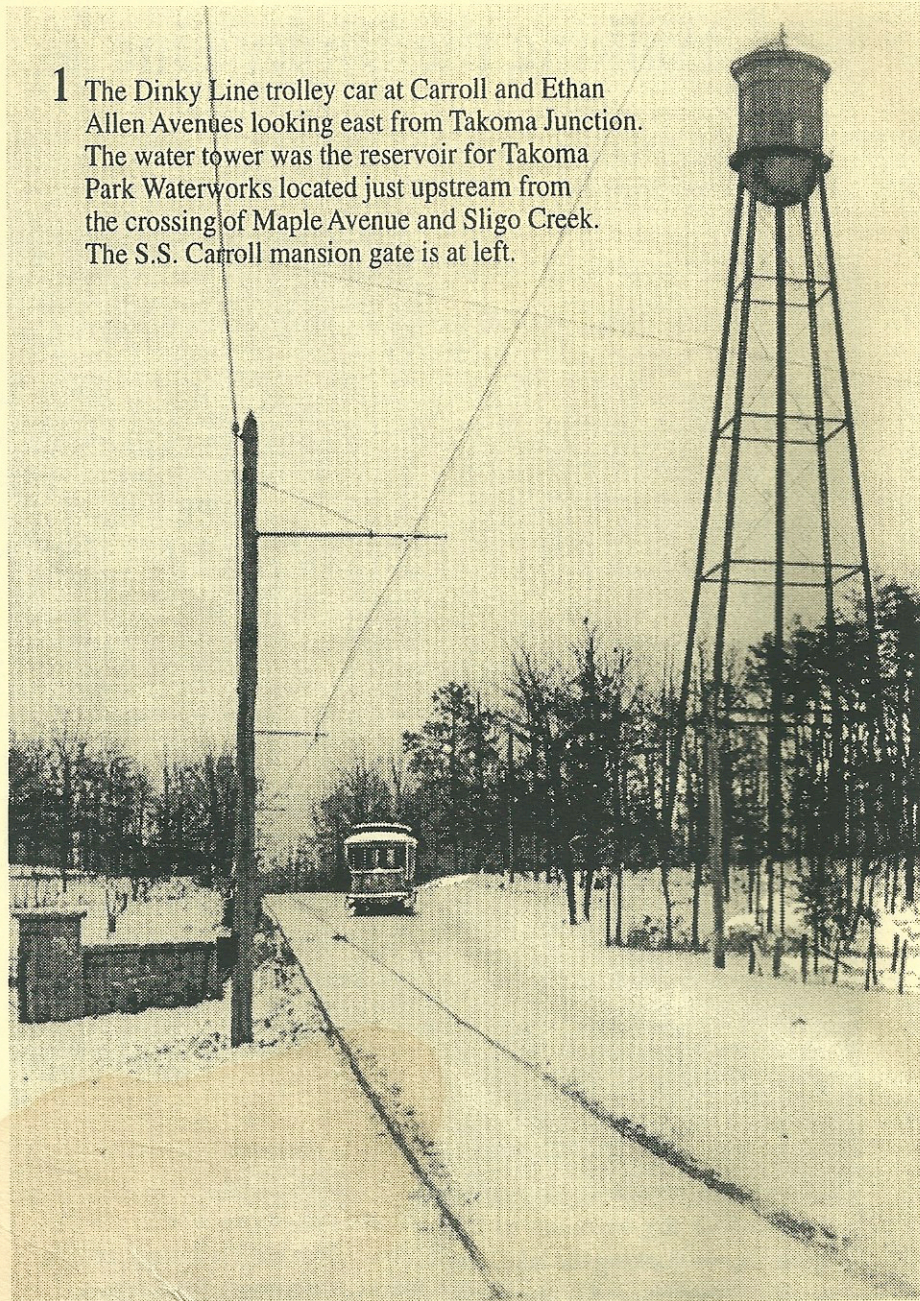
without charge. The remainder of the evening, after the vaudeville, can be spent in dancing, and later in the season startling open-air acts, such as high diving and wire walking, will be presented. The management, Messrs. Moore and Smith, intend to make this one of the most attractive resorts of the season. Mr. Moore's long connection with our leading hotels is sufficient assurance as to the cuisine and Mr. Smith's association with the National Theater is a guarantee of a clean, legitimate entertainment.

From the *Evening Star*, Saturday, June 2, 1900





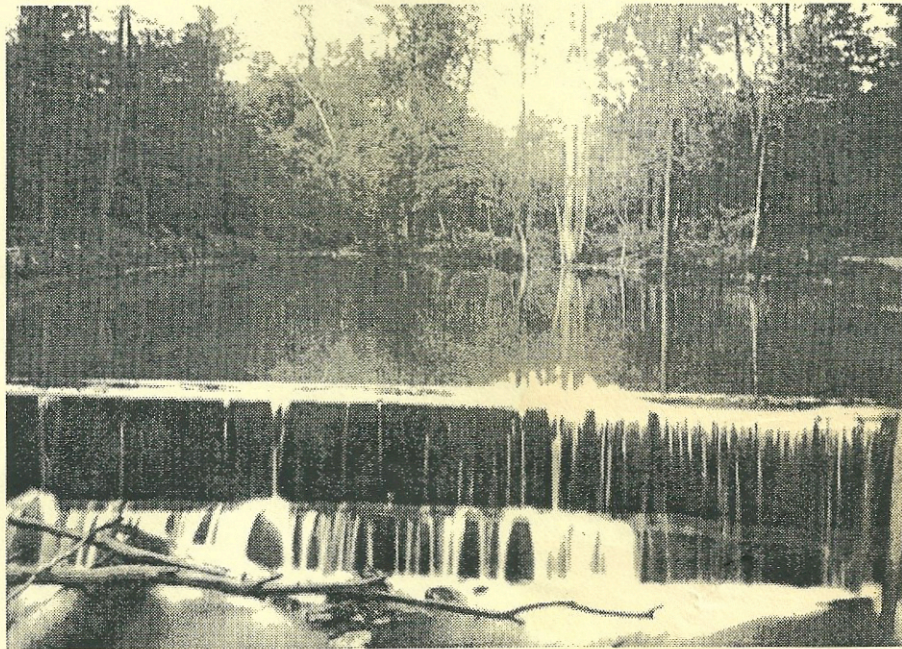
1 The Dinky Line trolley car at Carroll and Ethan Allen Avenues looking east from Takoma Junction. The water tower was the reservoir for Takoma Park Waterworks located just upstream from the crossing of Maple Avenue and Sligo Creek. The S.S. Carroll mansion gate is at left.



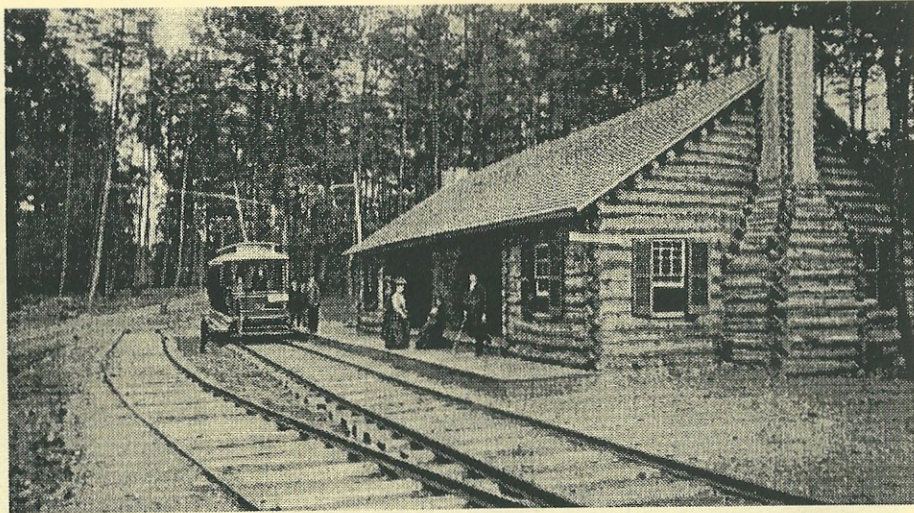
2 The Takoma Park Waterworks on Sligo Creek near Maple Avenue.



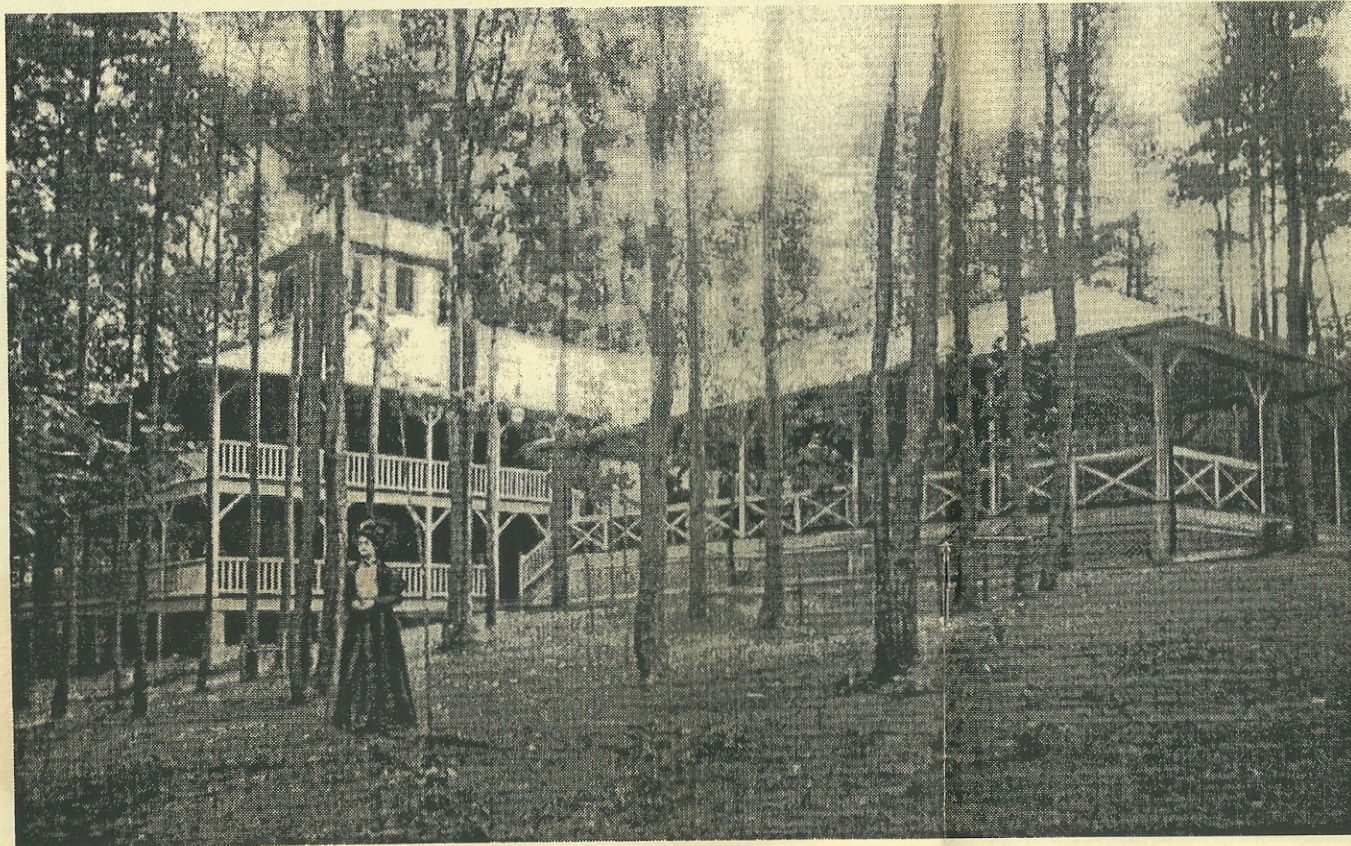
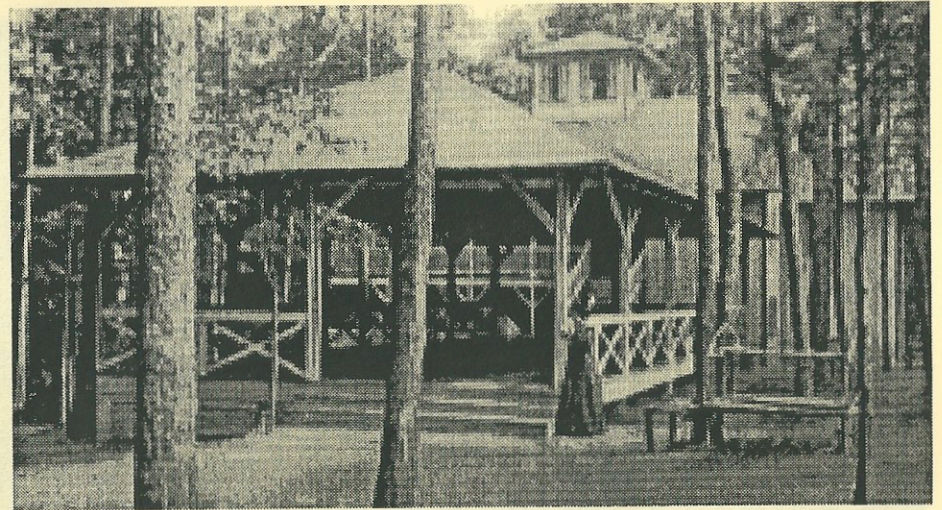
3 The dam at Takoma Park Waterworks. Local streams carried much more water before development and sewer construction.



4 The Dinky Line terminus near the current corner of Elm and Heather Avenues.

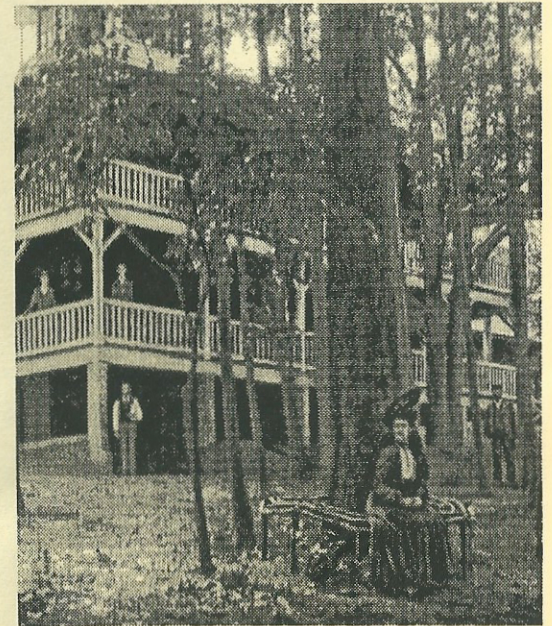


5 The dancing pavilion at the Glen Sligo Hotel. Hotel is in the background.

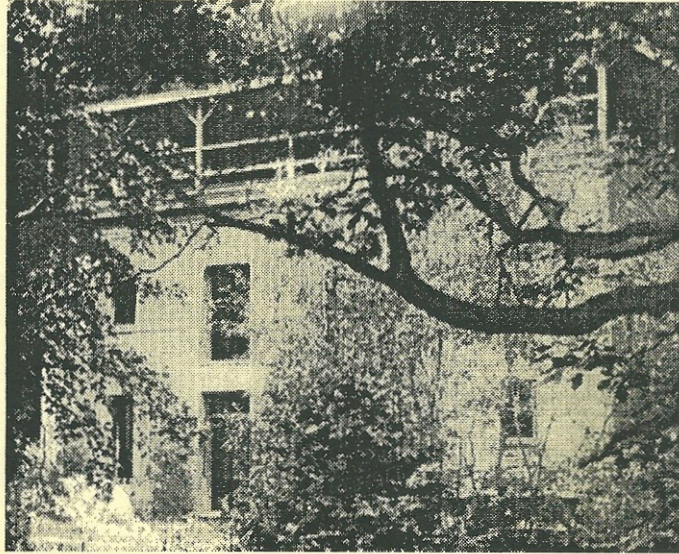


6 The Sylvan Theatre in the foreground lawn area was where vaudeville acts were performed. The audience watched from the hotel porches and pavilion.

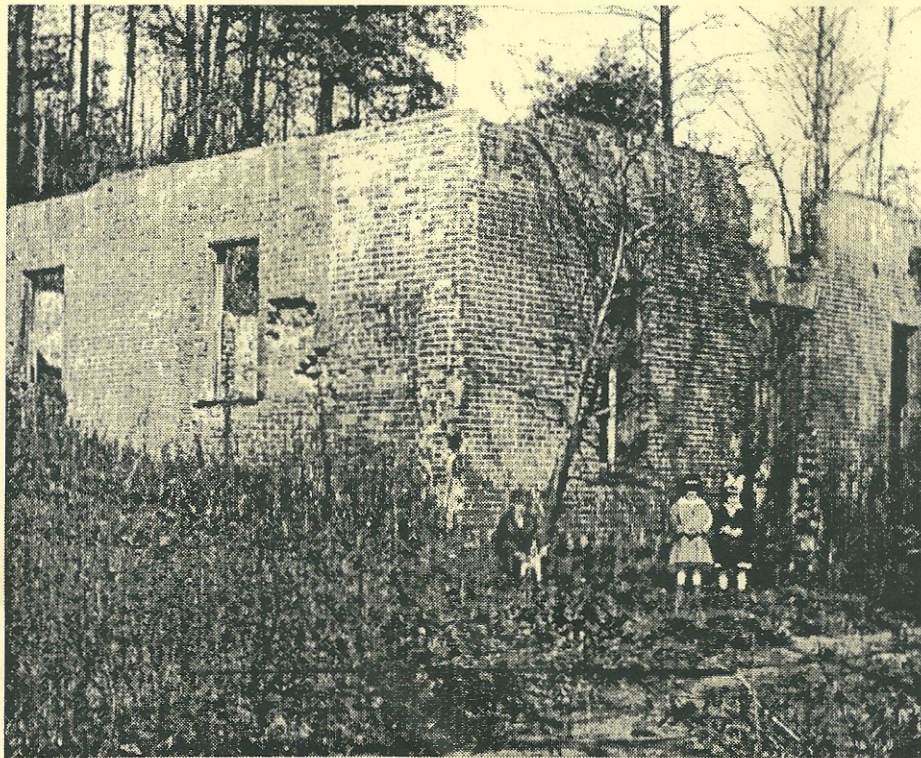
7 Guests at the Glen Sligo Hotel, 1901.



8 Sligo Mill. The rooftop porch was at the end of a walkway leading from the hotel.



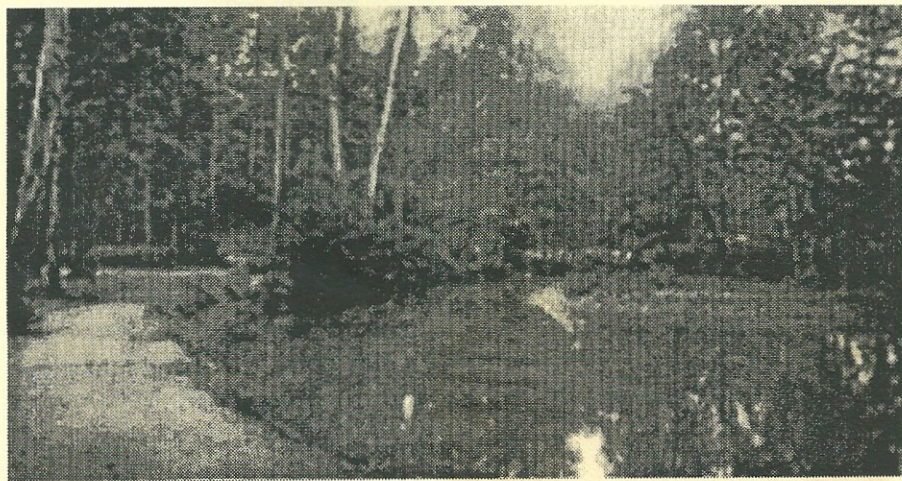
9 The remains of the mill in the 1920s. It had been unused for about ten years. The hotel was demolished in 1920.



- 10** The bridge over the millrace, looking upstream. The path comes from the hotel up the hill to the left.



- 11** Sligo Mill pond at the foot of Heather Avenue.



12 The rustic bridge upstream from the mill pond.



Historic Takoma, Inc.

P.O. Box 5781 • Takoma Park, MD 20913 • 301-270-1700 • ext. 662